



SMD Shielded Power Chokes - SDC3D23HP SERIES

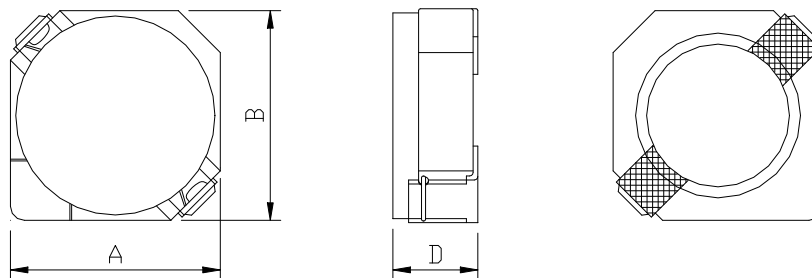


PART NUMBERING SYSTEM

SDC	3D23HP	—	220M	—	LF
TYPE	DIMENSIONS		INDUCTANCE		LEAD FREE

SHAPES AND DIMENSIONS

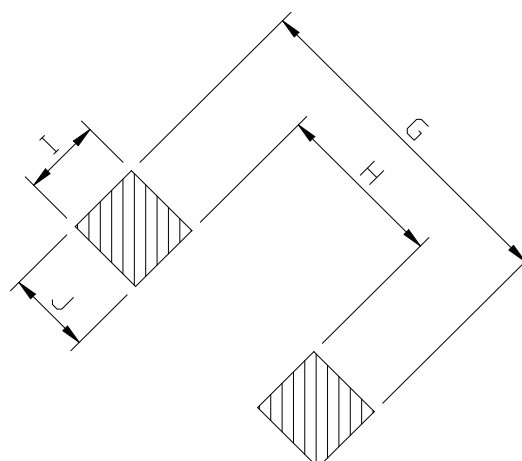
UNIT : mm



A=4.00 max. B=4.00 max. D=2.5 max.

RECOMMENDED PATTERNS

UNIT : mm



G= 5.2 H= 2.4 I = 1.5 J = 1.4

SMD Shielded Power Chokes - SDC3D23HP SERIES



SPECIFICATION TABLE

PART NUMBER	INDUCTANCE (μ H)	DCR (m Ω) (Max.)	Isat (A) (Max.)	Irms (A) (Max.)	TEST FREQ. (Freq.)
SDC3D23HP-1R2N-LF	1.2 \pm 30%	40.4	3.52	2.55	100KHz/1V
SDC3D23HP-2R2N-LF	2.2 \pm 30%	50.3	2.60	2.25	100KHz/1V
SDC3D23HP-2R7N-LF	2.7 \pm 30%	62.3	2.40	2.00	100KHz/1V
SDC3D23HP-3R3N-LF	3.3 \pm 30%	70.0	2.20	1.85	100KHz/1V
SDC3D23HP-4R7N-LF	4.7 \pm 30%	95.5	1.84	1.60	100KHz/1V
SDC3D23HP-5R6N-LF	5.6 \pm 30%	102	1.66	1.50	100KHz/1V
SDC3D23HP-6R8N-LF	6.8 \pm 30%	136	1.52	1.30	100KHz/1V
SDC3D23HP-8R2N-LF	8.2 \pm 30%	145	1.36	1.25	100KHz/1V
SDC3D23HP-100M-LF	10 \pm 20%	198	1.28	1.02	100KHz/1V
SDC3D23HP-120M-LF	12 \pm 20%	249	1.14	0.95	100KHz/1V
SDC3D23HP-150M-LF	15 \pm 20%	276	1.02	0.90	100KHz/1V
SDC3D23HP-220M-LF	22 \pm 20%	383	0.80	0.70	100KHz/1V
SDC3D23HP-330M-LF	33 \pm 20%	555	0.68	0.58	100KHz/1V
SDC3D23HP-470M-LF	47 \pm 20%	669	0.56	0.53	100KHz/1V

- Isat : DC current at which the inductance drops 35% (typ) from its value without current.
- Irms: The actual current when temperature of coil becomes $\Delta 40^{\circ}\text{C}$. ($T_a = +25^{\circ}\text{C}$)
- Operating temperature range -40°C to $+125^{\circ}\text{C}$, Electrical specifications at 25°C .
- Packing : 13" reel, machine-ready, embossed plastic tape (2,000 parts per full reel)..